

Native
Restoration

2024

**Grow
with
us.**

RiversideTM 
Horticulture

Native restoration starts here...

Kahikatea | Ecosource location: 45°39'27.9"S 170°38'30.2"E | Batch #1824

What we do best



Have extensive experience in growing bulk plants.



Eco source seed with GPS verification



Have plenty of capacity for large volume orders



Grow quality stock that is hardened off correctly to cope with the environment

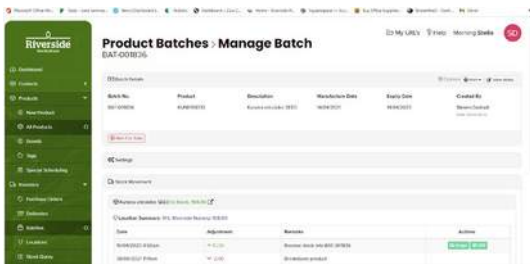


Complex batch tracking system for each production run. From seed source through to propagation and orders




Sophora microphylla | Ecosource location: 45°39'27.9"S 170°38'30.2"E | Batch #1824

Ecosourcing and batch tracking



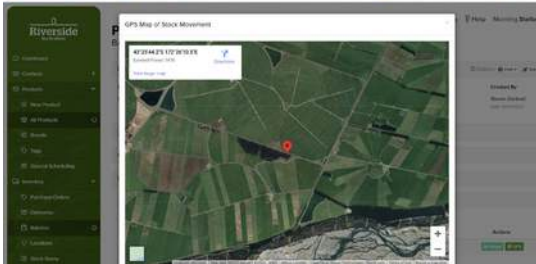
1.
TRACK EVERY INDIVIDUAL BATCH ONLINE

Once the seed is collected we clean it onsite, at the nursery. We then have the batch labelled with a unique number which is stored in our online system. This number will be used to track the origin of the seed for the rest of the plant's life.



2.
PHOTOGRAPH OF MOTHER PLANT

Included in our online system is the ability to add a photo of the mother plant or source of the seed.

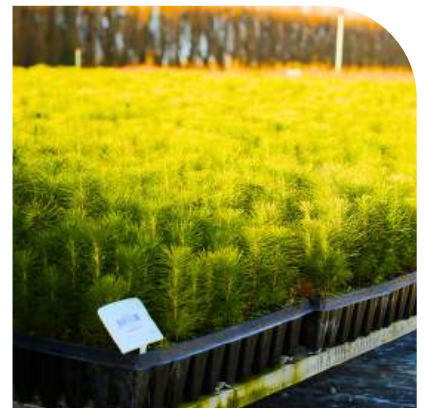


3.
EMBEDDED GPS DATA OF EXACT LOCATION

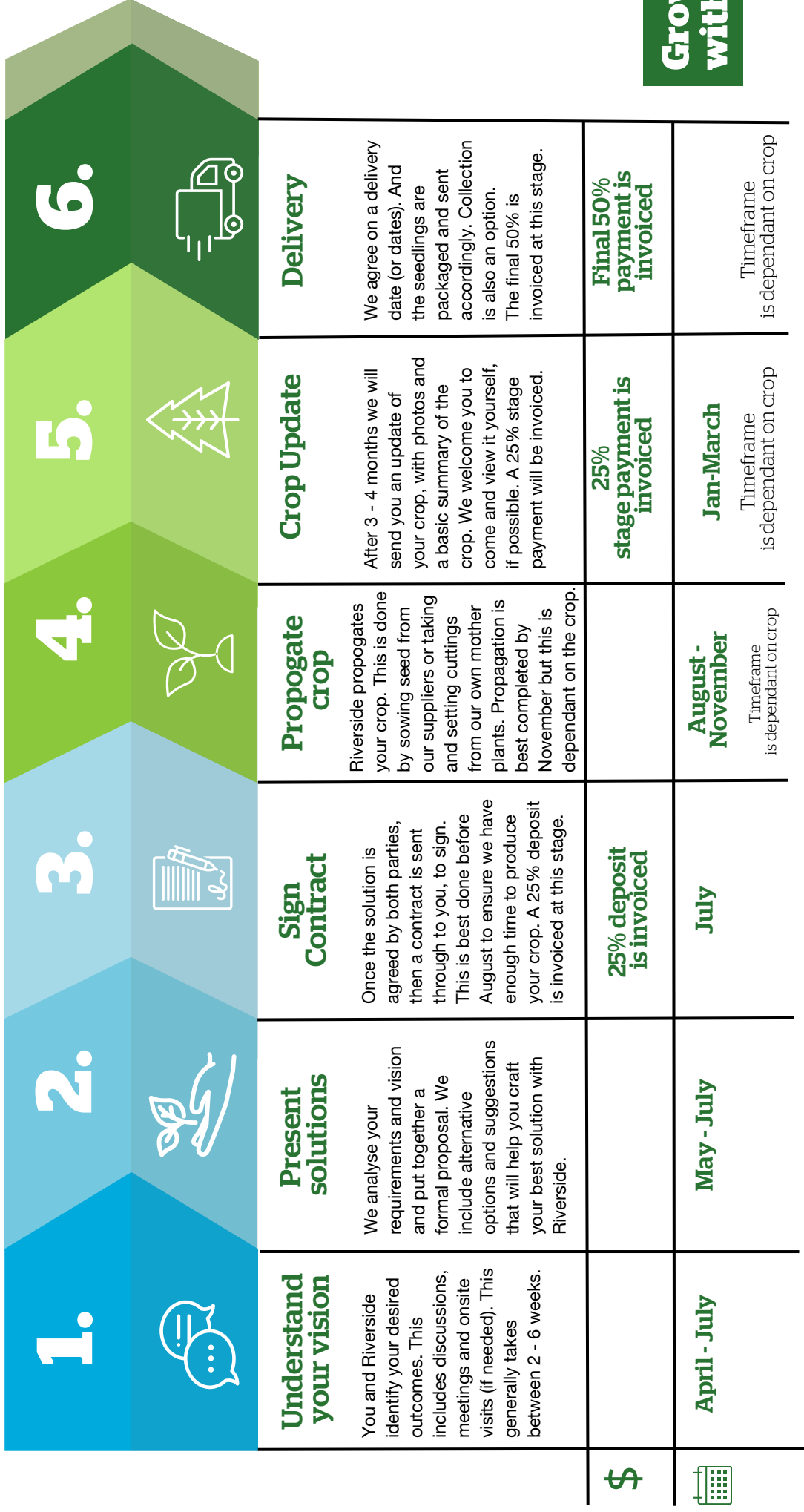
Along with the photograph, we also add in the GPS data of the exact location of seed collection.

Where your plants grow.

- 12 acres of prime growing space
- 3000m² greenhouse area
- Seed cleaning equipment
- Seeding machine
- Potting machines



Contract Growing Roadmap



Grow with us.

Orion

An ongoing relationship to offset Orion's carbon footprint. Over 140,000 plants have been planted since 2021. And over 100,000 more contracted over the coming years.



Hurunui Landcare

78,000 native plants grown and installed over 2 years on 65 hectares of marginal land in the Hurunui District Catchment. This project supported farmers to fence off and plant up waterways.

Halo Project

80,000 native plants supplied to The Halo Project in Dunedin since 2021. The Halo Project supports landowners to restore parts of their land to native forests.





Give me a call on 021 853 612

Fergus Dartnall
Native Restoration Contracts Manager

Hello, I'm Fergus, a 6th generation horticulturalist and shareholder here at Riverside Horticulture. I started fresh out of school and joined my older brother Steven and dad, Andrew in the business.

I started in projects and moved into project managing large contracts. Like the Hurunui District Landcare Group project which coordinated the growing and installing of 78,000 plants over 65 hectares of catchment land, on farms in the Hurunui district.

I was also a part of the school group that created Earth to Earth back in 2017. A brand that Riverside now owns and continues to develop products for. You can read more about the biodegradable plant guards and pots that we have developed under this brand on pages 8 and 9 of this booklet.

After seven years at Riverside, I have moved into more of a sales role focusing on native restoration projects and helping our clients succeed in their unique projects and achieving the outcomes that they want and care about.

Give me a call on 021 853 612 to discuss what your native restoration needs are for 2025 and beyond.
Cheers, Ferg.



A brand of



EnviroPot.

Plant me in the ground

Earth to Earth is a brand of Riverside Horticulture. A product range containing fully biodegradable EnviroPots and EnviroGuards, leaving future generations with less to clean up.

- 100% Biodegradable
- Improves planting efficiency onsite.
- Decreases the use of plastic.
- Less shock to the plants root system.
- Customizable printing.
- Plant directly into the ground



NZ's own biodegradable plant pot



Pot print design is customisable for contract grown orders over 1,000 plants. Back your brands sustainability with real action.



EnviroPots come from nature and go back to nature.



A brand of



EnviroGuard

Plant protection that doesn't cost the Earth.

EnviroGuards are designed to protect your new plants while eliminating the impact that plastic sleeves have on the environment. Our biodegradable plant guards were designed with practicality at the forefront. They are made in New Zealand from sustainable resources.

- **100% biodegradable & recyclable board**
- **3 different sizes/ heights available**
- **Protects new plantings for 12+ months**
- **Simple and easy to use, designed for efficient install**
- **Anchors with bamboo cane**
- **Natural cardboard that blends into the environment**



NZ's toughest biodegradable plant guard.



EnviroGuards come from nature and go back to nature.



**Grow
with
us.**





Get in touch with Fergus

021 853 612

fergus@riversidehort.co.nz



(03) 313 8734



sales@riversidehort.co.nz



**75 Boys Road, Rangiora,
North Canterbury**



www.riversidehorticulture.co.nz

RiversideTM
Horticulture 